

7.1.3

Describe the facilities in the Institution for the management of the following types of degradable and non-degradable waste

INDEX

Sr. No.	Details of Evidence
1	Waste Management Facilities and Practices

Waste Management Facilities and Practices

(A) Solid Waste Management

Bio Gas Plant have been installed in the campus for disposal of organic solid waste from mess and canteen. Waste food per day is processed in these plants. It produces an output of gas daily, which is used in the kitchen of the Hotel Management. A daily record of food waste fed into the plant and gas produced /used is separately maintained. . It produces output of 5 Kg gas per 20 Kg of raw material. A record of daily quantity of food waste put into the Bio Gas Plant is separately maintained. Geotagged photos are enclosed. In order to dispose of various solid waste from the campus, MoU with M/s Sandeep Enterprisers in place which includes collection, transportation, treatment and disposal of solid waste material.

(B) Liquid Waste Management

Sewage Treatment Plants are installed at various strategic locations across the campus. Waste water from the campus is directly connected to drainage line as per norms.

(C) Biomedical Waste Management

Biomedical waste are disposed of outside the campus by taking appropriate precautions. Before it is disposed off, it is treated with various types of solvents like non-halogenated solvents, halogenated solvents and aqueous solvents. Formal MoU is in place with M/s Divya Waste Management Co. which ensure collection and proper segmentation of biomedical waste generated from its various departments and finally it is disposed of following statutory guidelines.

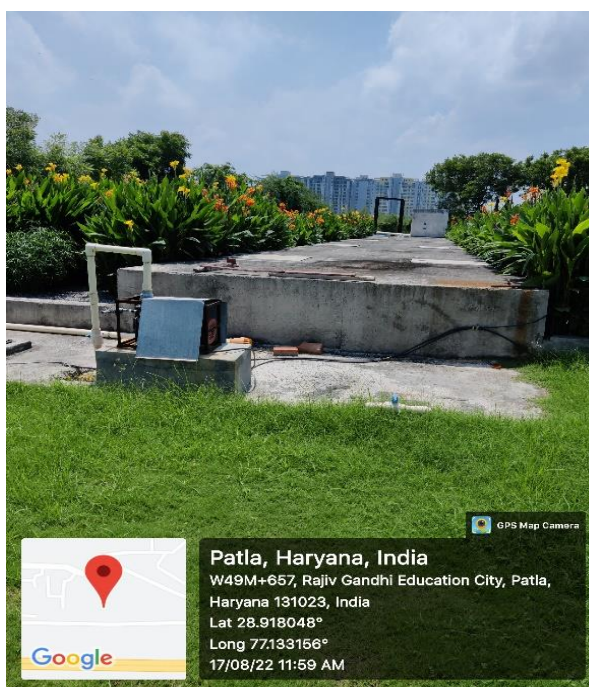
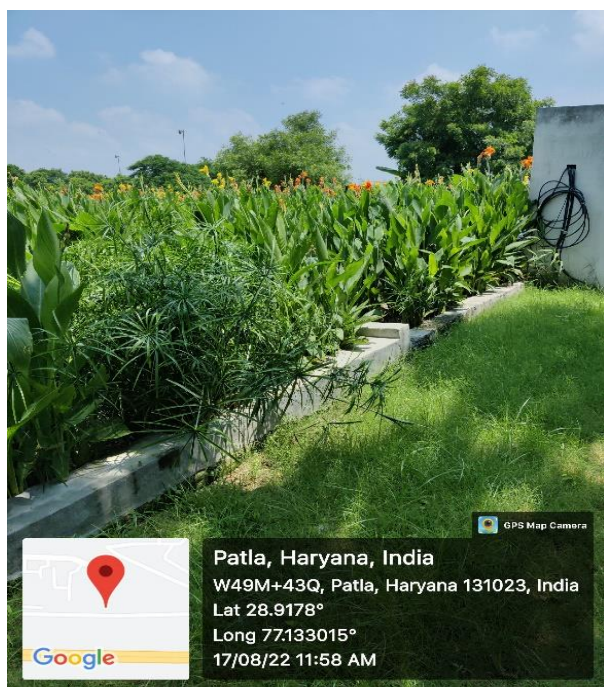
(D) E-Waste Management

MoU is in place with **M/s PEGASUS WASTE MANAGEMENT PRIVATE LIMITED** for “E-waste” management which covers all items under its purview as per E-waste Management rule 2016 and thereafter amendments such as Computers/Laptops, Electronic Devices used in Labs, TV/CCTV/Computer

Hardware/Projectors Fax Machines/Printers /Freezers/LED Bulbs/Vending machines etc.

(E) Hazardous chemicals Waste Management

For safe and hazard-free disposal of Chemical waste (liquid, solid) it is accumulated in drums or containers separately. Waste storage areas are checked weekly for leaks or spills. Waste containers are labeled with contents, hazards (flammable, combustible, acid, non-halogenate, halogenated etc.), and accumulation dates. Before disposal, pH is checked and if acidic, before disposal it is neutralized. Solvents are recycled with the help of fractional distillation process.



(A) Liquid Waste Management: SEWAGE TREATMENT PLANT

SRM UNIVERSITY DELHI-NCR, SONEPAT

Established under Haryana Private Universities Act 2006 as amended by Act no.8 of 2013 and recognized by UGC u/s 2(f) of UGC Act, 1956

39, Rajiv Gandhi Education City, Delhi-NCR, Sonapat-131029, Haryana (India)
Tel : 0130-2203700-01 | Tollfree : 1800 180 1216 | Website : www.srmuniversity.ac.in



(B) Liquid Waste Management: SEWAGE TREATMENT PLANT

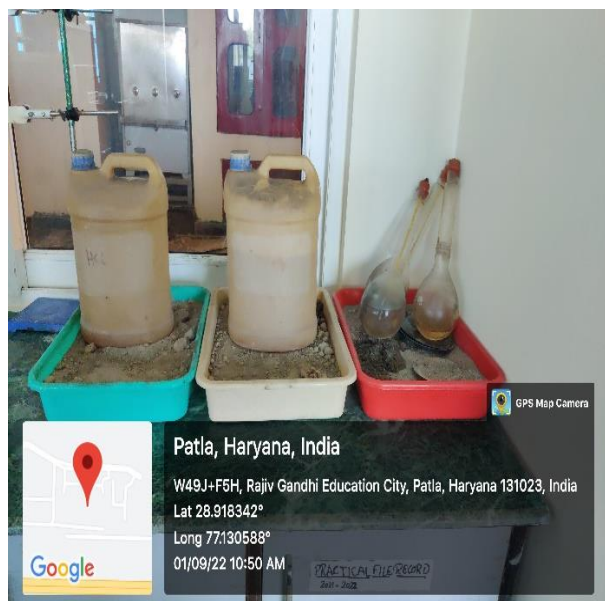


(C) Solid Waste Management: COMPOST PIT

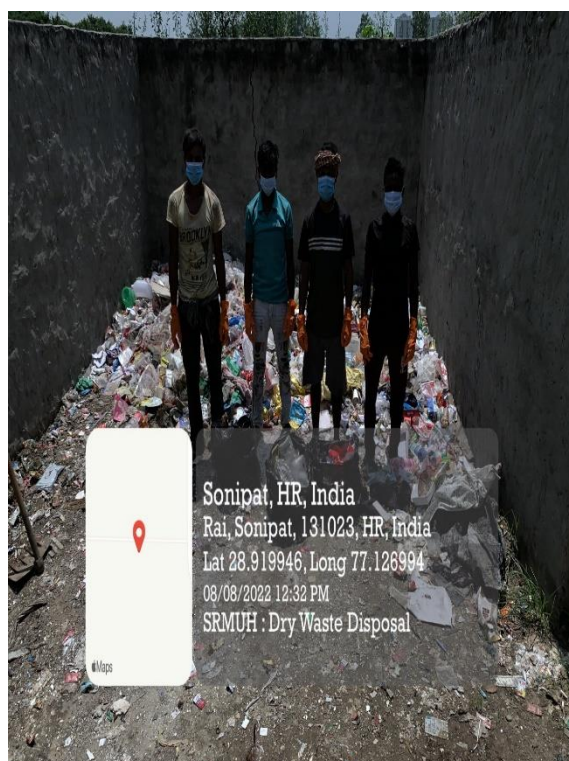
SRM UNIVERSITY DELHI-NCR, SONEPAT

Established under Haryana Private Universities Act 2006 as amended by Act no.8 of 2013 and recognized by
UGC u/s 2(f) of UGC Act, 1956

39, Rajiv Gandhi Education City, Delhi-NCR, Sonapat-131029, Haryana (India)
Tel : 0130-2203700-01 | Tollfree : 1800 180 1216 | Website : www.srmuniversity.ac.in



(D) Hazardous Chemicals Waste Management



(E) Solid Waste Management: DRY Waste Disposal

SRM UNIVERSITY DELHI-NCR, SONEPAT

Established under Haryana Private Universities Act 2006 as amended by Act no.8 of 2013 and recognized by UGC u/s 2(f) of UGC Act, 1956

39, Rajiv Gandhi Education City, Delhi-NCR, Sonapat-131029, Haryana (India)
Tel : 0130-2203700-01 | Tollfree : 1800 180 1216 | Website : www.srmuniversity.ac.in